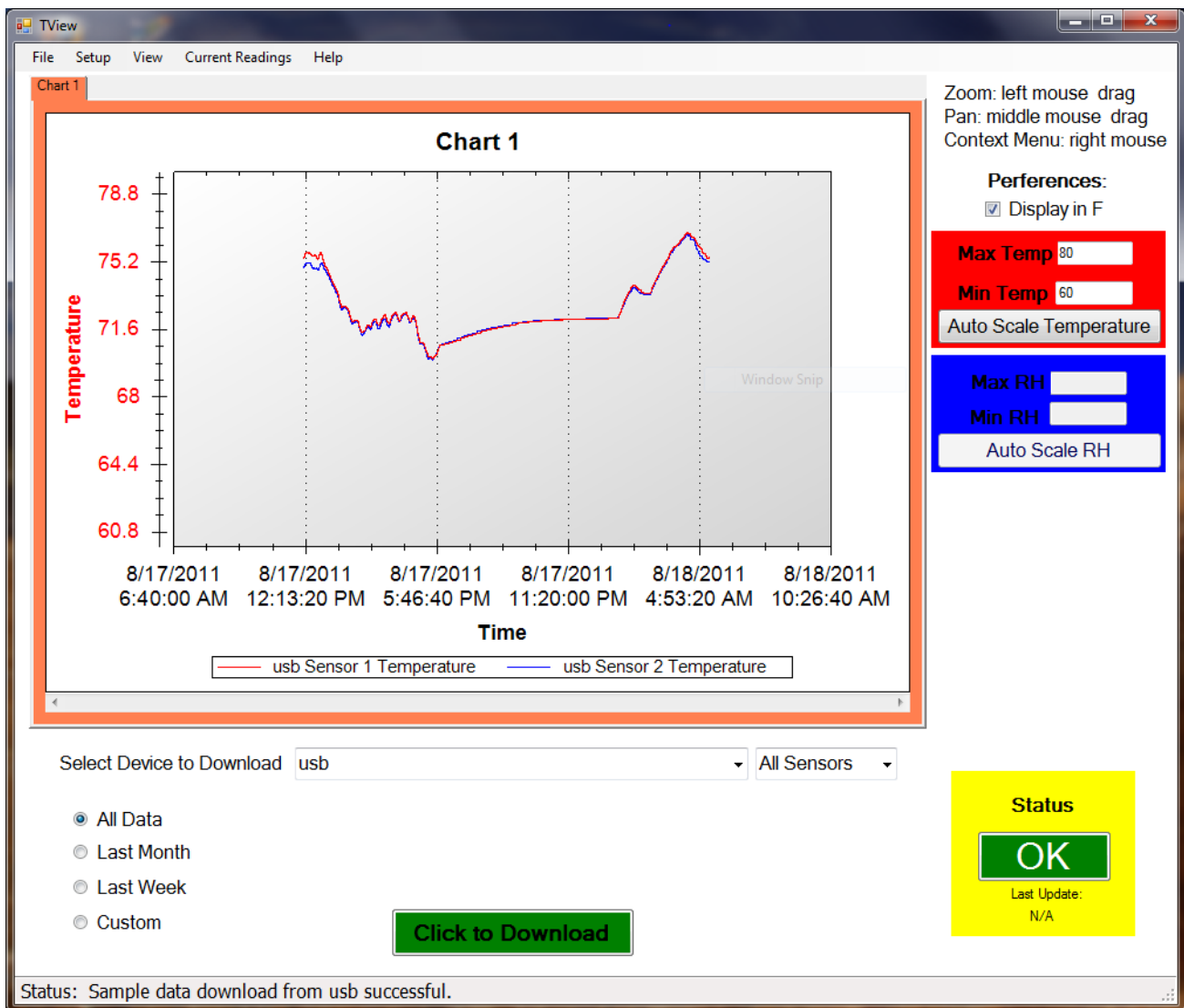


TView Software

Copying data from the display

Downloading, or copying data from a TV2 to a computer is done via the USB cable. If you are powering your display with a wall adaptor you will need to plug the display into your computer with the USB cable to download data. You can unplug the USB cable from the power cube and plug it into a USB socket on your computer. This will not affect the data you have already collected.





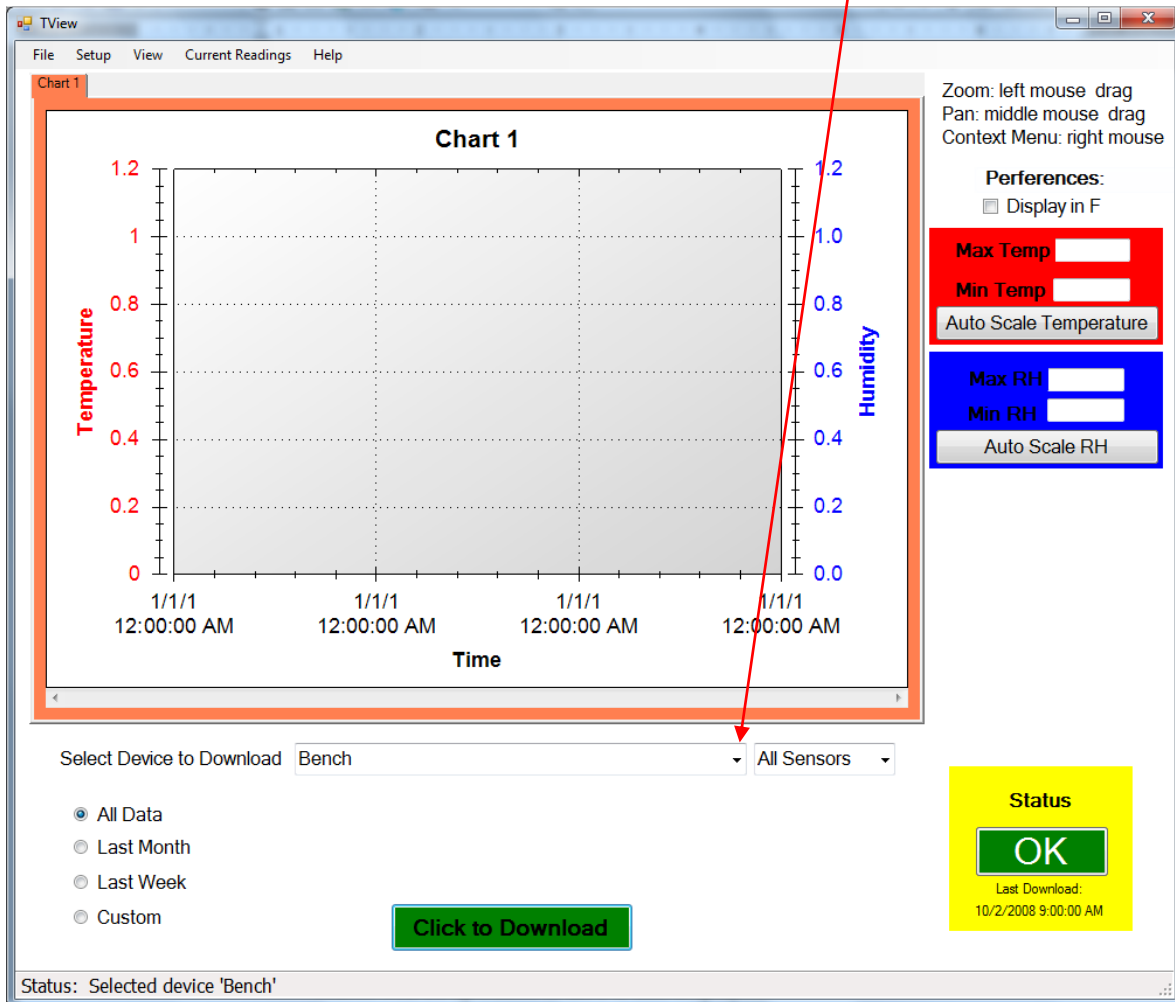
TView Software Users Guide

To obtain the free version of TView software:

1. Click on the 'Resources' link on the 2di web site: <http://www.e2di.com>. Click on Care and User Guide for TV2, TV1 and Dialers link.
2. Click the link for the PC Download software and select the version you need.
3. Save it to your computer.
4. **Unzip the file** and click on Setup. *(If you have an older version of the software already installed on your computer you must uninstall it first).*
5. During the install process, a directory will be created and files will be written to your computer. Make sure you have rights to do so. You will also be given an opportunity to install the software in a directory other than the default directory. We recommend that you accept the default directory. This works just like any other Windows installation process.
6. Once the software is installed, click on the TView icon to open the program. The icon will be in the Two Dimensional Instruments folder. You can, of course, copy the TView icon to your desktop for convenience.
7. You must have the TV2 plugged into your Local Area Network.
8. To link the TV2 to your TView software:
 - a. Click on 'Setup' and then on 'Manage TV2 devices'
 - b. Click on Add TV2 and key-in the IP address of the TV2. (The IP address can be found on the Quick-check screen and on the TV2 'Network Menu').
 - c. 'Click on Connect' (Do not change the Port 80 setting)
 - d. When the Registration form appears enter a name for the TV2 (location) and touch click OK.
9. The TV2 will now be visible to the TView software and data can be downloaded from it.

To Copy Data from the TV2

1. To copy data from a TV2 you must first select it. Click the small arrow on the right side of the box entitled 'Select Device to Download'. All known TV2s will be listed by name. Select the one you want to download data from..



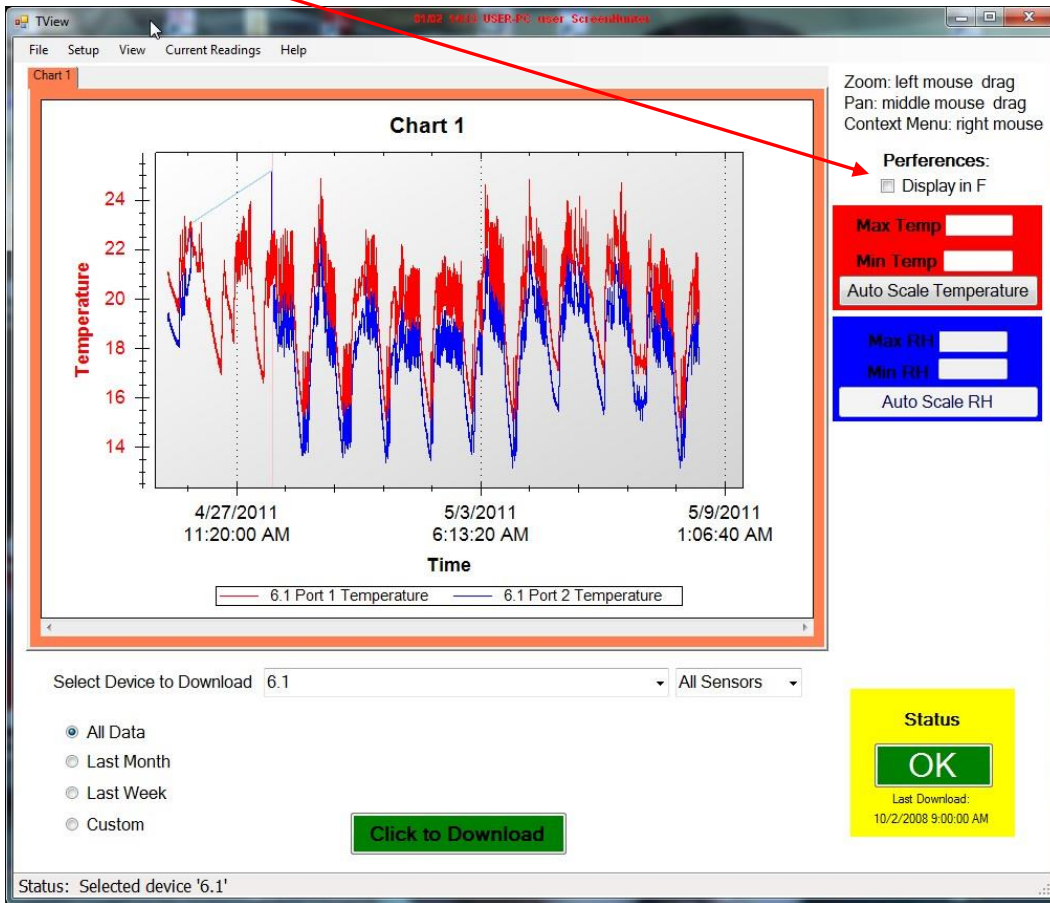
- a. Select the device to download by left clicking it.
- b. Select the date range you want to download by clicking one of the buttons to the left of the green download button. The 'All Data' button is selected by default, so that all stored data for the selected sensor(s) will be downloaded and displayed. Clicking on last month, last week, or custom and setting a date range will cause only that data to be copied to the PC and displayed. *This can be tricky and may not work the way you think it should if the date on the TV2 is different than the one on the PC.*



- c. Click the 'Click to Download' button.
 - i. If there is already data from the same TV2 on the chart you will be asked if you want to replace the existing data. If you answer yes, the displayed chart will be erased. If you do not want to erase the data, click 'no' and save the existing data before downloading additional data. You could also move the chart with existing data to another tab, by right-clicking on the chart.
2. By default, the TView will set the scale of the display so that the downloaded data will be positioned in the center of the chart. If you type a value in the Max Temp or Min Temp boxes to the right of the display, the scale will be adjusted accordingly.
3. Once the chart has been copied to your computer, the actual data can be moved around or zoomed into, to highlight a particular area.
 - a. To zoom into a group of temperatures, draw a box around them with the mouse: Position the cursor at the top left hand corner of the area and while holding down the left mouse button move the cursor toward a lower right position. When the mouse button is released the chart will be rescaled to show only those temperatures within the box you have drawn. To return to all temperatures, click the right mouse button and select 'Undo all Zoom/Pan'.
 - b. To move a plot to a different chart right click the mouse on the chart and select 'Move a Plot to another graph'.

Working with Charts

1. When TView is opened, a blank chart is displayed. It is listed as Chart 1 on the tab at the top of the chart and as the title of the chart. You can rename this by double-clicking on the tab and typing a description in the text box. This will rename the chart and the tab.
2. You can hover over any point of the curve with the mouse cursor to see the value, the date and the time it was saved.
3. A temperature scale is on the left of the chart and a RH scale is on the right side of the chart. You can change the temperature scale to Fahrenheit by clicking the box to the right of the chart under preferences. You can also set the Y-axis for temperature and humidity by typing a value into the boxes provided.





Drop-Down Tabs

1. The 'File', 'Setup', 'View', 'Current Readings', and 'Help' tabs:

a. File

- i. **New Chart.** This creates an empty chart with new tab to the right of any already displayed tabs. The tab and chart description can be changed by double clicking on the tab and typing the new name in the text box. Multiple charts, each with its own tab can be created.
- ii. **Open Chart.** This command allows the user to open a file previously saved and stored on a computer. You will be prompted for a file name. Only files with a file extension of TXV can be opened. You must enter a Username and Password if the chart was originally saved with a Username and Password (see iii below).

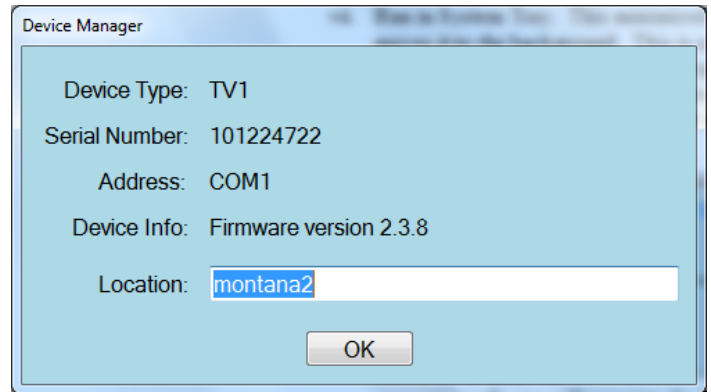
Note: It is not possible to load the same file into more than one chart or to change any part of a file displayed in TView.

- iii. **Save Chart.** This saves the active chart to your computer . The saved chart will be encrypted and have a TXV suffix. It is encrypted with the username and password you entered when the program was opened.
- iv. **Export Chart to .XLS.** This exports the chart shown on the active tab to an XLS file that can be opened with Microsoft's Excel. Each sensor's data will be transferred to a separate worksheet on the Excel chart. **NOTE:** It is possible to change this data in Excel.
- v. **Print Chart.** Sends the active chart to a printer. If there is more than one plot on the chart, you should use a color printer so you can tell the plots apart. The chart looks better in landscape mode..
- vi. **Close chart.** This immediately erases the selected chart and deletes it from your computer.
- vii. **Run in System Tray.** This minimized the TView program and moves it to the background. This is useful if you are auto-downloading to your computer and want to leave the program running without seeing it on your desktop.
- viii. **Exit.** This closes the program and stops any further activity.



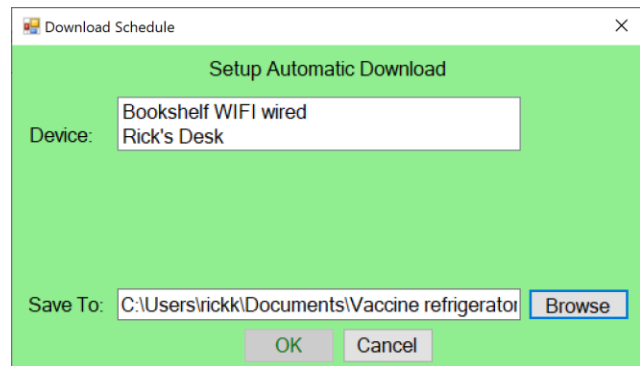
b. Setup tab:

- i. Manage TV2s. Used to rename a TV2 and determine which port it is attached to. *You can view the available ports on your computer with Device Manager found in the hardware section of Properties of the 'My Computer' program.*



- ii. Schedule Download.

- iii. Once scheduled, data will automatically be written to your file ever few minutes.



1. Select the TV2 to be downloaded by clicking 'Add New Device' and selecting the one you want.
2. Type in the file name and specify the location on your computer where you want the data stored. The file name will be proceeded by a year. A new file will begin on the first day of each month. You will have 12 files after a year.

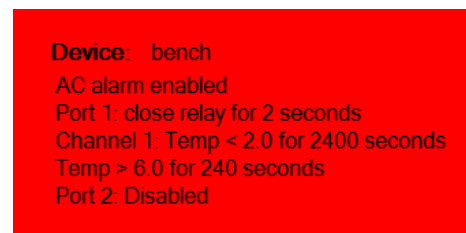
Note: You must have rights to create and to write files on your computer when you schedule an auto download.

- iii. Email Alerts. *Step by step instructions for setting the email alerts can be found under the 'Help' tab.*

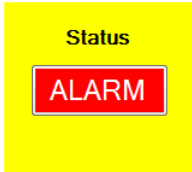
c. View tab:

To view alarm settings or logs, the TView software must be in Auto-Downloading mode.

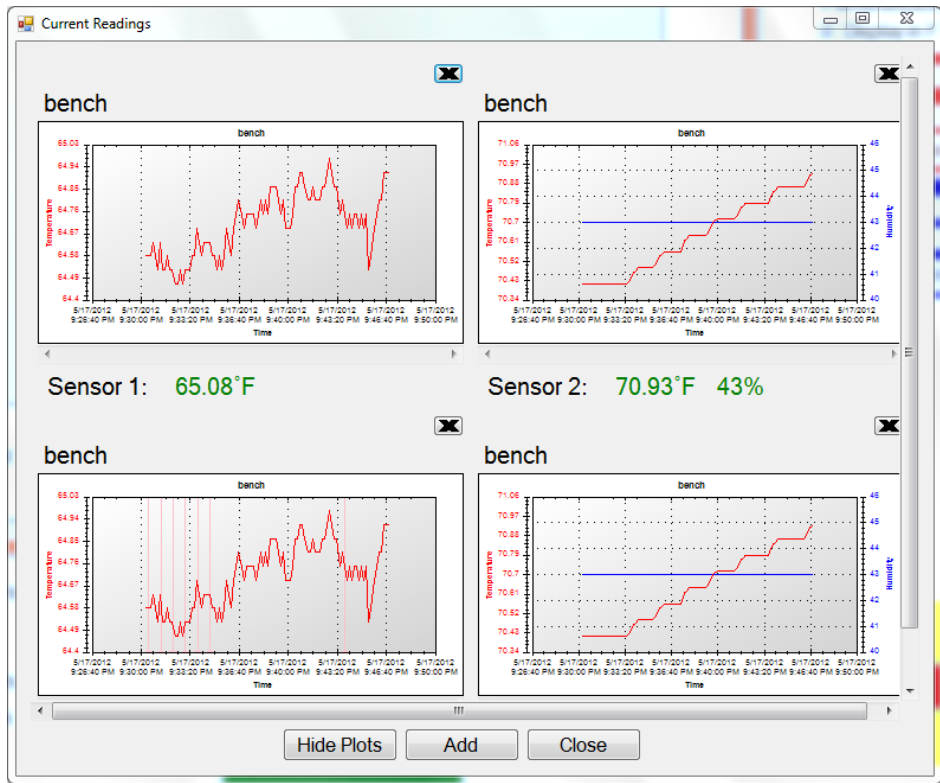
- i. Alarm setting. Shows alarm setting for a particular TV2. When you select this, TView queries all attached TV2s for alarm settings.



- ii. Alarm log. Shows a record of all alarms for all TV2s being auto-downloaded. This display is accessed when the user clicks on the status button at the lower right of the TVView program. If a known TV2 goes into alarm mode, the status button will indicate that an alarm has occurred by displaying the word 'Alarm' in red letters to alert the user. By double clicking this button the alarm log will be shown. After reviewing the alarm, click 'Mark as Reviewed' to hide it or right click an alarm and delete to remove the alarm from this list.



d. Current Readings: This screen displays real time data from TV2’s sensors. Data does not have to be auto-downloading but the TV2 must have been detectable by the TVView software.



- 1) When this window opens it will be blank. To add a sensor to this screen click the 'Add' button and select the TV2 to which the sensor is attached. A popup will list the sensors attached to that TV2. Select one or more of them by clicking on it. The last 100 readings will be displayed in the chart along with the current temperature. You can add additional sensors to this page. Clicking the 'Hide chart' button will hide the chart and display only the numeric reading. The charts are updated every few seconds.



(Note: These temperatures shown are the actual temperatures taken by the sensor, which may or may not be the same as the logged temperatures, depending on how you are averaging data.)

- 2) A plot can be removed by clicking on the X in the upper right area of the chart.
- 3) If a plot is displayed **and an alarm occurs for that sensor**, the temperature will turn **red** and the alarm status button on the main page will be updated.

e. Help:

1. 'User guide'.
2. Email Alert Setup. This word document contains a step-by-step guide to implementing the Email Alert Setup.
3. 'TView Diagnostics Menu' will be used when requested by a 2di technician. All activity of the TView software is archived. This information can be saved to a file and emailed to 2di.
4. 'TView Communications Diagnostics' Menu archives all communications between TView and TV2s for support and troubleshooting.
5. 'Save Diagnostics file to send to 2di'. This will save the diagnostic file to your computer so that it can be emailed to 2di for help in troubleshooting.

